

## LAB ASSIGNMENT # 8

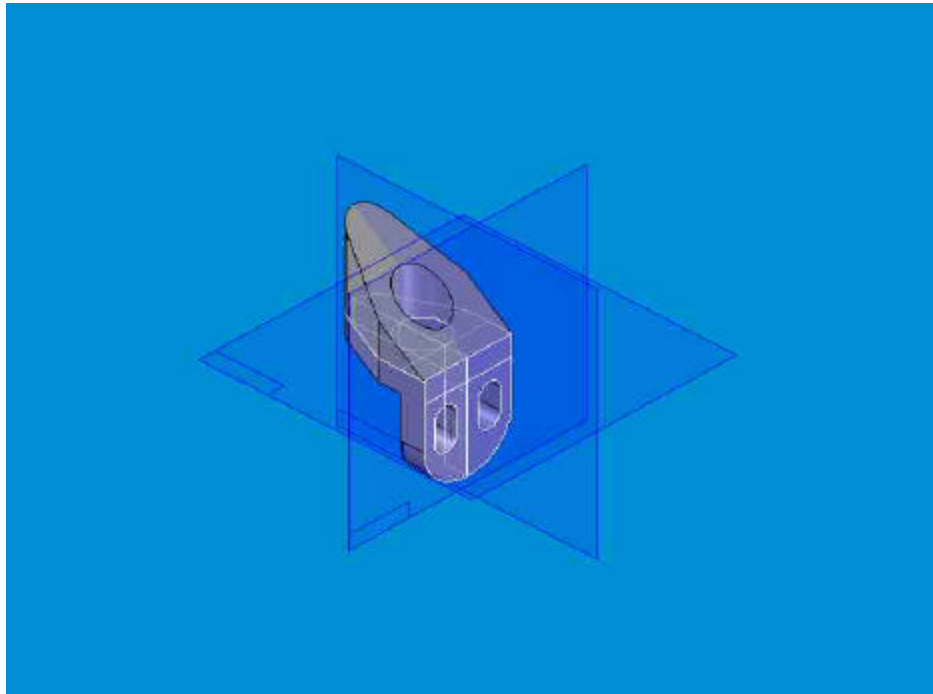


Figure 1

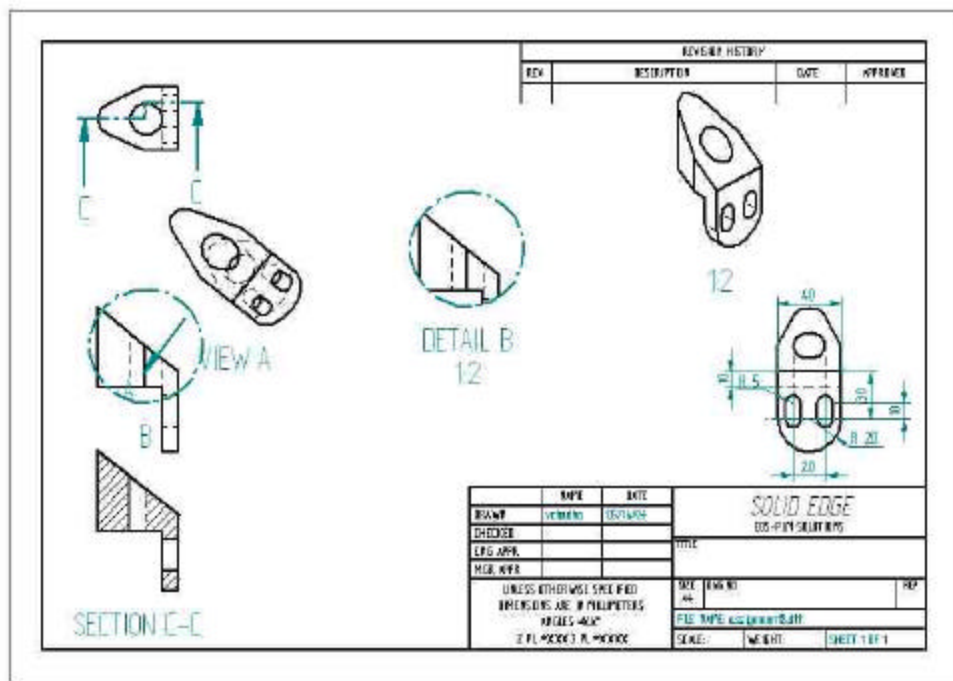


Figure 2

**Note:** Front View is drawn by looking at the inclined side.

- 1) Use Solid Edge Draft environment.
- 2) Use metric units.
- 3) Draw the three Orthographic views and the Isometric view using the Third Angle Projection (TV above the FV and Right hand side View on the right of FV) of the Part model in the figure 1 given as assignment8.par file and using the Drawing View Wizard tool in the Draft environment. The **result** should look like **figure 2**.
- 4) The three views should be aligned.
- 5) Use the Auxiliary View Tool to make the Auxiliary view.
- 6) Use the Section View Tool to make the Section view.
- 7) Use the Detail View Tool to make the Detail view of the inclined side and scale to 1:2.
- 8) Dimension the front view as shown.
- 9) Print your Name, Section number and SSN.
- 10) Assignment is due at the end of this lab session.